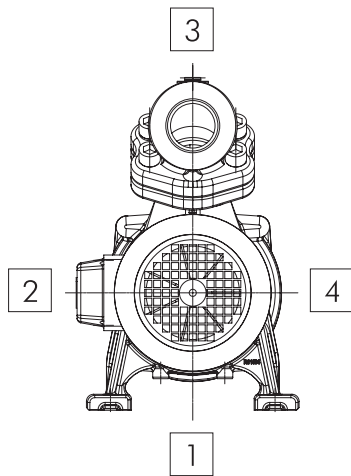


## Mechanical Features



### Horizontal End-Suction Pumps – Terminal box and foot location

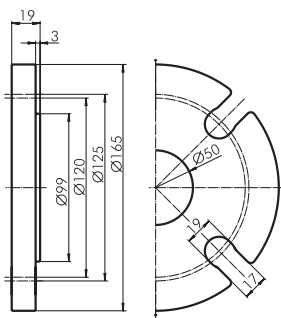


| Location | Series SBA, SBG and SBF |               |
|----------|-------------------------|---------------|
|          | Terminal box location   | Foot location |
| 1        | –                       | Standard      |
| 2        | Standard                | ●             |
| 3        | □                       | –             |
| 4        | ●                       | ●             |

- available
- available upon request
- not available

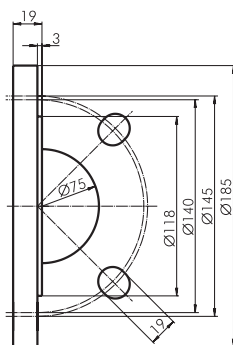
**Attention:**  
Terminal box location and foot location cannot be facing in the same direction!

### Horizontal End-Suction Pumps – Suction port



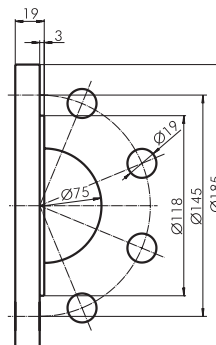
DN50, 4 hole flange connection  
size 140

DN50, 4 hole flange connection,  
is equivalent to ASME B16.1-  
2005 Class 25 Flange NPS 2 and  
JIS B 2239:2004 10K A50

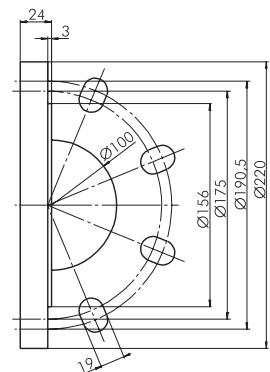


DN65, 4 hole flange connection  
sizes 400, 550, 600  
sizes 650, 850, 1150, 800, 900,  
1300

DN65, 4 hole flange connection,  
is equivalent to ASME B16.1-  
2005 Class 25 Flange NPS 2 1/2  
and JIS B 2239:2004 10K A65

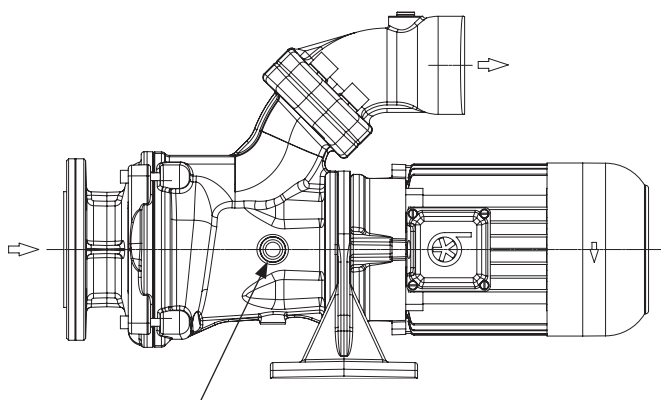


DN65, 8 hole flange connection  
sizes 850, 1150, 1100, 1300  
Available upon request



DN100, 8 hole flange connection  
sizes 1350, 1550, 1850  
sizes 1600, 1700, 2000

### Dry-running Version (-GD)



Monitoring window for models  
with second mechanical seal (-GD)

A second mechanical seal is available  
for unlimited dry-running. By utilizing  
an additional oil reservoir, continuous  
lubrication of the mechanical seal can be  
assured, which in turn allows dry-running  
of the pump.

The oil level within the reservoir can be  
monitored through an integrated moni-  
toring window.